



UNIVERSITÉ  
CATHOLIQUE  
DE LILLE 1875



**Your international experience**  
at the crossroads of Europe

# Contents

- 1 - 2 Welcome
- 3 - 4 The City of Lille
- 5 Research & Internships
- 6 Our Academic Offer
- 7 - 8 Undergraduate & Graduate
- 9 Programs in English
- 10 Short Programs
- 11 Resources & Services
- 12 Calendar & Admissions
- 13 - 14 University Projects

# Welcome to Université Catholique de Lille

Founded in 1875, the *Université Catholique de Lille* is a comprehensive institution unique in France, characterized by interdisciplinarity, anchored in humanist values, **open to diversity**, and respectful of all opinions.

It consists of 5 Faculties, 20 « Grandes Écoles » (graduate schools in engineering and business), schools, and institutes, and a hospital group.

**It is France's largest private not-for-profit university**, with an enrollment of 33,000 students, and **217 degree programs in six areas of study**.

The excellence of the university's reputation can be traced to its active and **innovative teaching methods**. Many courses are taught in a small-group format and ensure closer attention to student progress.

In keeping with its tradition of openness, the *Université Catholique de Lille* was **one of the pioneering French universities in the area of international mobility**, signing partnership agreements with American universities as early as the 1970s.

Through teaching, research, and care; through resources that make creative innovations possible; and through its student life and the services it offers, the University accomplishes its missions with a goal of general interest and public utility.

## Discover «La Catho»

**33,000**



Full-time students

**540**



partner universities worldwide

**5,379**

outgoing students



**5,476**

incoming international students

**2nd**



most beautiful campus in France



**15 minutes**

walk from Lille's historic city

**2 triple-crowned**



business schools (EQUIS), AACSB & AMBA accreditations



**109**

double diploma programs with universities around the world

**200+**

students organisations



**88%**

of international students very satisfied with their exchange program

**4,700m<sup>2</sup>**



dedicated to experimental education

**8**



hospitals and health care institutions



# LILLE

a city of Art, Culture, and History

## BIG CITY ADVANTAGE



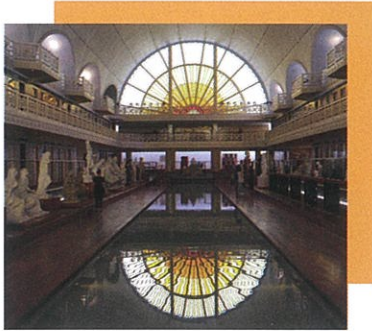
## SMALL CITY ATMOSPHERE

### A city of History

Founded in 1066 by the Count of Flanders, Lille – *Rijsel* in Flemish – became an important trading and stock market point on the route between the rich Flemish towns and the Champagne fairs. As evident from some of its architecture, **Lille was successively Flemish, Burgundian, and Spanish** before finally becoming French in 1667 under Louis XIV, whose military engineer, Vauban, built Lille's impressive Citadel.

### A city of Art

Four world-renowned museums in the region, among the **largest in France** (Musée des Beaux-Arts, Modern Art Museum, La Piscine de Roubaix, Louvre-Lens).



Most of the museums are free on Sunday.

### A city of Culture

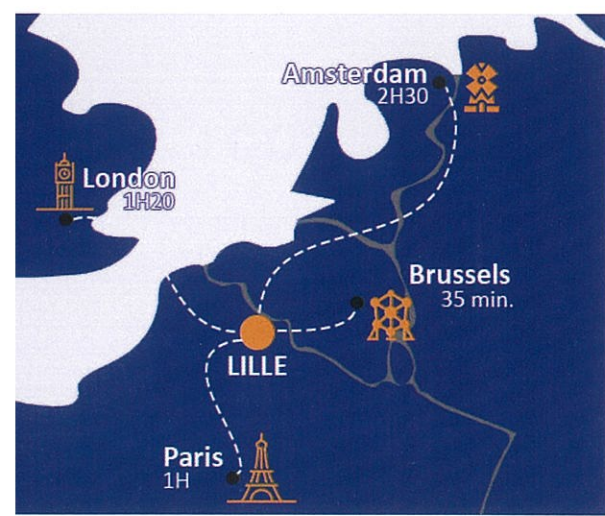
Lille also boasts a **significant number of theatres, music halls, movie theatres, an opera house, and a national orchestra**, while the metropolis is home to a large number of cultural events, including the Lille Piano(s) Festival, the International Independent Movie Week, the International Series Festival, a contemporary dance festival or the "Fête de la Musique" on June 21<sup>st</sup> with free concerts all over town.



43% of the inhabitants are under the age of 30, it is the 2<sup>nd</sup> largest French university centre



100 events in Lille every evening, thousands of restaurants and bars in the city



### Lille, at the crossroads of Europe

Lille's strategic location and the area's rich resources have made it **one of the most fought over regions in Europe**, a history visible today particularly through the numerous memorials from the last two World Wars in the region, toured by national and international visitors each year.

Lille enjoys all of the conveniences of being at the centre of a **2 million inhabitant urban zone**, yet remains a "human-sized" university city with 250,000 inhabitants. Visitors can get around easily on foot or by bicycle. Public transport also offers the metro, the tramway, and many bus lines running frequently and late into the night.

### More dynamic than ever



2004 European Capital of Culture

2018 1<sup>st</sup> International TV Show Festival «Series Mania»

2019 lille3000 Festival «Eldorado»

2020 World Design Capital



## RESEARCH & INTERNSHIPS

**Université Catholique de Lille's research efforts** are mainly focused on **societal and energy transition, innovative ecosystems, ethics** and new economic systems, **health and care** in today's society. The University's research is original in its **transdisciplinary** approach and willingness to combine scientific excellence with service in and for our **social, economic, and cultural** environment.

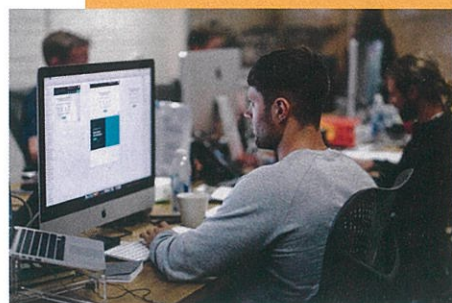


**650** researchers and research professors

**220** PhD students

**7** certified labs, including one specialised in ethics, «ETHICS» (Ethics on experiment, Transhumanism, Human Interactions, Care & Society).

A vast majority of our degrees require students to complete a **professional internship** in France or abroad. Students may receive assistance through our specialized services and **Career Centers**, as well as financial support through **ERASMUS** or the **Mermoz Program** of the Hauts-de-France region if they choose to work abroad.



Our internship programs benefit from close and long-lasting institutional relations with **major international companies** headquartered in our region (Auchan, Decathlon, Thalès, Lesaffre...) and from the economic vitality of the region.

## OUR ACADEMIC OFFER

### Exchange programs (1 or 2 semesters)

- Bachelor and Master level
- Extensive course offerings in English
- 24 to 30 ECTS credits per semester (12 to 15 US credits)
- French language support
- No tuition fees in host university
- Accommodation partly subsidized
- Optional student hospitality package available upon request (welcome & accommodation, meal plan, health insurance, and more)

### Programs taught in English for degree-seeking students

- Business & Management
- Law and Political Sciences
- Science & Engineering

See page 9

### Short programs (2 weeks to 1 semester)

- LILLE Programs
- IÉSEG Summer Programs
- ESPOL Programme in European Politics

See page 10

... and all our programs taught in French are available in our **faculties, « Grandes Écoles », schools & institutes :**

#### Les Facultés de l'Université Catholique de Lille:

- **ECOLE 360** – Innovation & Design Thinking
- **ESPOL** – European School of Political and Social Sciences
- **FD** – Faculté de Droit
- **FGES** – Faculté de Gestion, Économie & Sciences
- **FLSH** – Faculté des Lettres & Sciences Humaines
- **FMM** – Faculté de Médecine & Maïeutique
- **FT** – Faculté de Théologie
- **ISEA** – Institut Supérieur d'Expertise et d'Audit

#### EDHEC Business School

#### ESJ Paris-Grand Lille – School of Journalism

#### ESPAS – Business x Biosciences

#### ESTICE International Management

#### Icam – Institut Catholique d'Arts et Métiers

#### ICM – Institut de Communication Médicale

#### IÉSEG School of Management

#### IFP – Institut de Formation Pédagogique

#### IFsanté – Institut de Formation en Santé

#### IKPO – Institut de Kinésithérapie Podologie Orthopédie

#### ISL – Institut Social de Lille

#### ISTC – Institut des Stratégies et Techniques de Communication

#### IU2S – Institut Universitaire Santé Social

#### POLE IIID – Digital & Creative School

#### HEI - Yncréa Hauts-de-France – Hautes Études d'Ingénieur

#### ISA Lille - Yncréa Hauts-de-France – Institut Supérieur d'Agriculture

#### ISEN Lille - Yncréa Hauts-de-France – Institut Supérieur de l'Électronique et du Numérique

# UNDERGRADUATE

# GRADUATE

## LAW, INTERNATIONAL RELATIONS AND POLITICAL SCIENCE



European & international law, accounting & financial law, business law, international relations, European political sciences

📍 EDHEC, ESPOL, FD, IÉSEG

## ARTS & HUMANITIES



Modern languages, performance arts, French language and literature, information & communication, media, culture and communication ; history geography, psychology, English and American studies

📍 FLSH, ISTC

## SCIENCE & TECHNOLOGIES



2D / 3D / animation movie & video games design; Sciences, technologies and health; biotechnologies, life sciences, digital sciences, physics & chemistry, industrial engineering, mechanical engineering, computer science, electrical, digital & biotechnologies, landscape engineering\*, environmentalism\*

📍 FGES, Pôle IIID

Yncréa Hauts-de-France (HEI, ISA, ISEN)

## BUSINESS & MANAGEMENT

Economics, finance, management, auditing, accounting, banking & insurance, international business



📍 EDHEC, ESPAS, ESTICE, FGES, IÉSEG

## THEOLOGY & ETHICS

Religious sciences, theology, canon law, health ethics\*



📍 FMM, FT

## HEALTH & SOCIAL CARE

Health & social sciences, nursing\*, physical therapy\*, pediatrics\*, podiatry\*, midwifery\*, social work\*



📍 FMM, IFSanté, IKPO, ISL, IU2S

## LAW, INTERNATIONAL RELATIONS AND POLITICAL SCIENCE



European & international law, accounting & financial law, private & public law, business & competition law, risk management, human rights & development, global and European politics, food politics, international security policy

📍 EDHEC, ESPOL, FD, FLSH

## ARTS & HUMANITIES



Journalism, history, cultural management, international relations, documentary film production, English and American studies, occupational psychology\*, clinical psychology\*, neuropsychology and cognitive neuroscience\*, strategic communication, digital communication

📍 FGES, FLSH, ISTC

## SCIENCE & TECHNOLOGIES



- Digital conception & editing (2D & 3D animation movie, video games design)
- Health engineering
- Agriculture, agro-business, bioengineering, digital & biotechnologies, BioNanotech, environment & risks
- Information engineering, augmented reality & AI, Internet of Things, big data, cybersecurity.
- Industrial engineering, mechanical engineering, electrical engineering, energetics, transportation systems, smart cities, textiles technologies and innovation

📍 ESPAS, FGES, ICAM, Pôle IIID, Yncréa Hauts-de-France (HEI, ISA, ISEN)

## BUSINESS & MANAGEMENT

International business management, e-business, corporate & market finance, asset management, financial institutions management, auditing, intercultural management, financial economics, retail management, big data analytics, digital marketing, business & luxury tourism, fashion management, investment banking & capital markets, technical sales engineer



📍 EDHEC, ESPAS, ESTICE, FGES, FLSH, IÉSEG, ISEA

## THEOLOGY & ETHICS

Bible study, Religious sciences, theology



📍 FT

## INNOVATION & DESIGN THINKING

Computing, engineering & innovation ; design thinking



📍 Ecole 360, FGES

## HEALTH & SOCIAL CARE

Medical & midwifery school\*, nursing\*, physical therapy\*, podiatry\*, health & social politics\*



📍 FMM, IFSanté, IKPO, ISL, IU2S



## PROGRAMS IN ENGLISH



## SHORT PROGRAMS

### FACULTY OF LAW

LL.M. (Master 1) in International and European Law  
LL.M. (Master 1) in International and European organisations  
LL.M. (Master 2) in Human Rights, Security & Development (Double degree possible with the American Mississippi College of Law)  
LL.M. (Master 1) in International and European Business Law  
LL.M. (Master 2) in International and European Business Law and Competition (Double degree possible with the American Widener Law University)  
Master in International Business & Law (IBL) in partnership with IESEG Management School



### FACULTY OF ARTS AND HUMANITIES

Master International Marketing (Double degree with Liverpool Hope University)  
Master English and American Studies

### FACULTY OF MANAGEMENT, ECONOMICS AND SCIENCE

Bachelor in Economy & Management  
Master International Management

### ESPOL - EUROPEAN SCHOOL OF POLITICAL AND SOCIAL SCIENCES

Master in Global and European Politics  
Master in Food Politics  
Master in International Security Policy

### EDHEC BUSINESS SCHOOL

Bachelor in Business Administration  
Master Grande Ecole (Lille, Nice, Asia & America)  
MSc in Business Management (Lille)  
MSc in Financial Economics (Nice)

### IESEG SCHOOL OF MANAGEMENT

Bachelor in International Business (Lille)  
Master Grande Ecole 5-year (Lille & Paris)  
MSc in International Business (Lille & Paris)  
MSc in Digital Marketing and CRM (Lille)  
MSc in Business Analysis and Consulting (Paris)  
MSc in International Accounting Audit and Control (Paris)  
MSc in Finance (Paris)  
MSc in Fashion Management (Paris)  
MSc in Investment Banking and Capital Markets (Lille)  
MSc in Big Data Analytics for Business (Lille)  
MSc in International Business Negotiation (Paris)  
International MBA (Paris)

### HEI - Yncréa Hauts-de-France - ENGINEERING SCHOOL

Master of Science and Engineering (MSE) Smart Cities

### ISA - Yncréa Hauts-de-France - INSTITUTE OF AGRICULTURE, FOOD INDUSTRY, ENVIRONMENT AND LANDSCAPE MANAGEMENT

Master of Science and Engineering - Food science  
Master of Science and Engineering - Environmental science  
Master of Science and Engineering - Agricultural science  
Master of Science and Engineering - Agricultural economics, marketing & management

### LILLE Programs

LILLE – “Learn In Lille, Live Europe” – combines a variety of innovative, student-centred academic programs at the *Université Catholique de Lille*, tailored to suit different academic needs and schedules, and to provide a welcoming environment and an excellent study/life balance.



LILLE European Summer Program (ESP): 2 month-long program sessions (June and July), 12 ECTS credits

LILLE Winter & LILLE Spring: customisable two to three-week programs, 8 ECTS credits

More information: [www.univ-catholille.fr/en/lille-esp](http://www.univ-catholille.fr/en/lille-esp)



 @ucilillestudyabroad

 @esplille

### IESEG Summer Programs

IESEG School of Management’s Summer programs portfolio is designed for students willing to benefit from IESEG’s academic excellence and multicultural environment while enjoying Paris. IESEG’s Summer programs are taught entirely in English and gather every year around 150 students from all over the world:

Entrepreneurship and Innovation Summer Program; International Fashion Business Summer Program; International Summer Academy.

More information: [www.ieseg.fr/en/programs/summer/](http://www.ieseg.fr/en/programs/summer/)

### ESPOL Programme in European Politics

This advanced programme focuses on the regulation of contemporary societies in a globalized world and on the regulation of International politics at the European and Global levels. Courses are taught in English and students follow a French course. The programme includes study trips to Brussels, Geneva and other European cities. Students have the option of studying at ESPOL during the autumn semester, the spring semester or for a whole year. This programme is open to undergraduate and graduate students and issues a Certificate and 30 ECTS for one semester or 60 ECTS for one year

More information <https://espol-lille.eu/en/education/>





## RESOURCES & SERVICES

### Services

■ The *Association d'Entraide Universitaire* (AEU) brings together five central hubs at the heart of the university: catering, accommodation, health, well-being and sport.

- University **dorms** on campus and in the city center
- 7 university **restaurants**
- 6 HA dedicated to **athletic facilities** (fitness center, gymnasium, sport centers)
- **medical center** general medical consultations, gynaecology consultations, dietitian consultations and psychological support

■ « Mission Accueil Handicap » : A service dedicated to **facilitate students with disabilities' life** on the campus.

■ Libraries & study rooms

### Student Associations

200 student **associations** on campus dedicated to arts, sports, culture, technology, internationalisation...

Among them, "La FEDE" is a federation of all student unions at *Université Catholique de Lille*. It represents students' interest on the different University's boards and councils and actively **improves students life** with events, outings, conferences...

Most of our faculties and schools also host an International students association which gathers French and international students. Throughout the year, these associations offer assistance to international students in their daily life, and organize social and cultural activities.



## CALENDAR & ADMISSIONS



### Fall semester

from end of August to mid-December or January depending on the faculty / school

### Autumn break

From late October to early November

### Christmas holidays

From end of December to early January

### Spring semester

from early January to end of May or June depending on the faculty / school

### Winter holidays

1 to 2 weeks, usually around end of February

### Spring holidays

1 to 2 weeks, usually around end of April

### Admissions

Admission and tuition fees vary according to the nature of the Study Abroad program you would like to enroll in.

### Exchange programs

If you come to *Université Catholique de Lille* as an exchange student in the framework of a partnership between our institution and your home university, we recommend that you contact the head of the International Office of your Department or Faculty in your home university a year before your study abroad period. There is no registration fee if you come to study at *Université Catholique de Lille* in the frame of an exchange program.

### Degrees in English

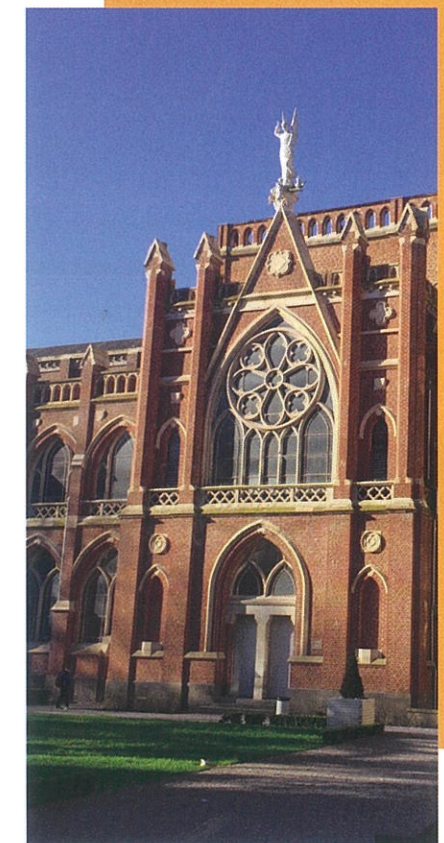
Admission procedures and tuition fees vary according to the departments, depending on the type of courses you intend to take. Please contact directly the Admission Office of our school/faculty in which you wish to apply for further information.

### Intensive programs

ESP1: 25 May to 23 June 2020

ESP2: 25 June to 24 July 2020

Contact [lilleprograms@univ-catholille.fr](mailto:lilleprograms@univ-catholille.fr) for further information.





# UNIVERSITY PROJECTS



# UNIVERSITY PROJECTS

## Energy and societal transition

In liaison with elected government representatives, researchers, inhabitants and partner companies, the *Université Catholique de Lille* has launched a global project that changes the campus and the city.

Since 2013, we have been renovating our buildings to **limit our carbon footprint** and make them models of **good practices**, genuine laboratories; we are installing solar panels and **use our own energy**, we encourage sustainable and electric means of transport; we support research on **connected farming** and will develop a farm at the heart of the city.



« Le Rizomm », a fully renovated & equipped building at the heart of social & technical research projects

Step by step, we are making the University an incubator for good practices and an accelerator of projects, focusing on both **technical and human aspects of the transition**. We are training students and professionals to become participants in this new model of society and we are **supporting experimentation** and **encouraging every initiative on campus**.

## Health & social care

With a **hospital group of 1,000 beds**, **health-care institutions**, **research centers** for medical ethics and **cutting-edge programs** for students, the *Université Catholique de Lille* has a strong **tradition of service to society**. As part of its mission to take care of the most vulnerable populations, the University, together with its health institutions and the local authorities, has set up two **“Living Labs”** around its campus. Those two urban projects aim at creating structures and activities to promote **new ways of integrating the most fragile people**. The two Living Labs provide an excellent innovative environment for social and health care students, as well as extremely **valuable data and feedback** for the University’s faculties and researchers.

## Ethics and new society model

The **historical commitment to ethics** at the *Université Catholique de Lille* affects every aspect of its service to students and their families, civil society, businesses, associations, and patients.

It is reflected in our current **ambition to be recognized internationally for multidisciplinary research** that places **human purpose at the heart of development and innovation**.

Nearly all the institutions that constitute the *Université Catholique de Lille* are implicated in ethics research, capitalizing on **over 30 years of research activity on ethical issues** related to anthropological and socio-economic changes in the contemporary world.

Ethics is also at the heart of pedagogy with more than **180 teaching units related to ethics** across the University and several experimental projects integrated in more than 900 students’ curriculum.

## Innovative teaching methods

To be at the forefront of educational transformation, the *Université Catholique de Lille* imagines new ways of teaching and learning and sets up transdisciplinary modules and programs. Our students are able to **experience these new methods thanks to spaces and projects dedicated to educational innovation**. For example, our engineering students are trained to lead innovative and **interdisciplinary projects in cooperation with businesses in real-life conditions**. FabLabs and co-design spaces have been set up to foster collaborative exchanges, **catalyze creativity** and **boost innovation**.



A co-design workshop





60 boulevard Vauban  
CS 40109 - 59016 Lille Cedex - France  
Tel. +33 (0)3 59 56 69 98  
international@univ-catholille.fr  
[www.univ-catholille.fr](http://www.univ-catholille.fr)



UNIVERSITÉ  
CATHOLIQUE  
DE LILLE 1875



ASSOCIATION  
DES PROGRAMMES  
UNIVERSITAIRES  
AMÉRICAINS



European Federation of Catholic Universities  
Fédération des Universités Catholiques Européennes  
Federación de Universidades Católicas de Europa



NAFSA  
Connecting People. Promoting the World.